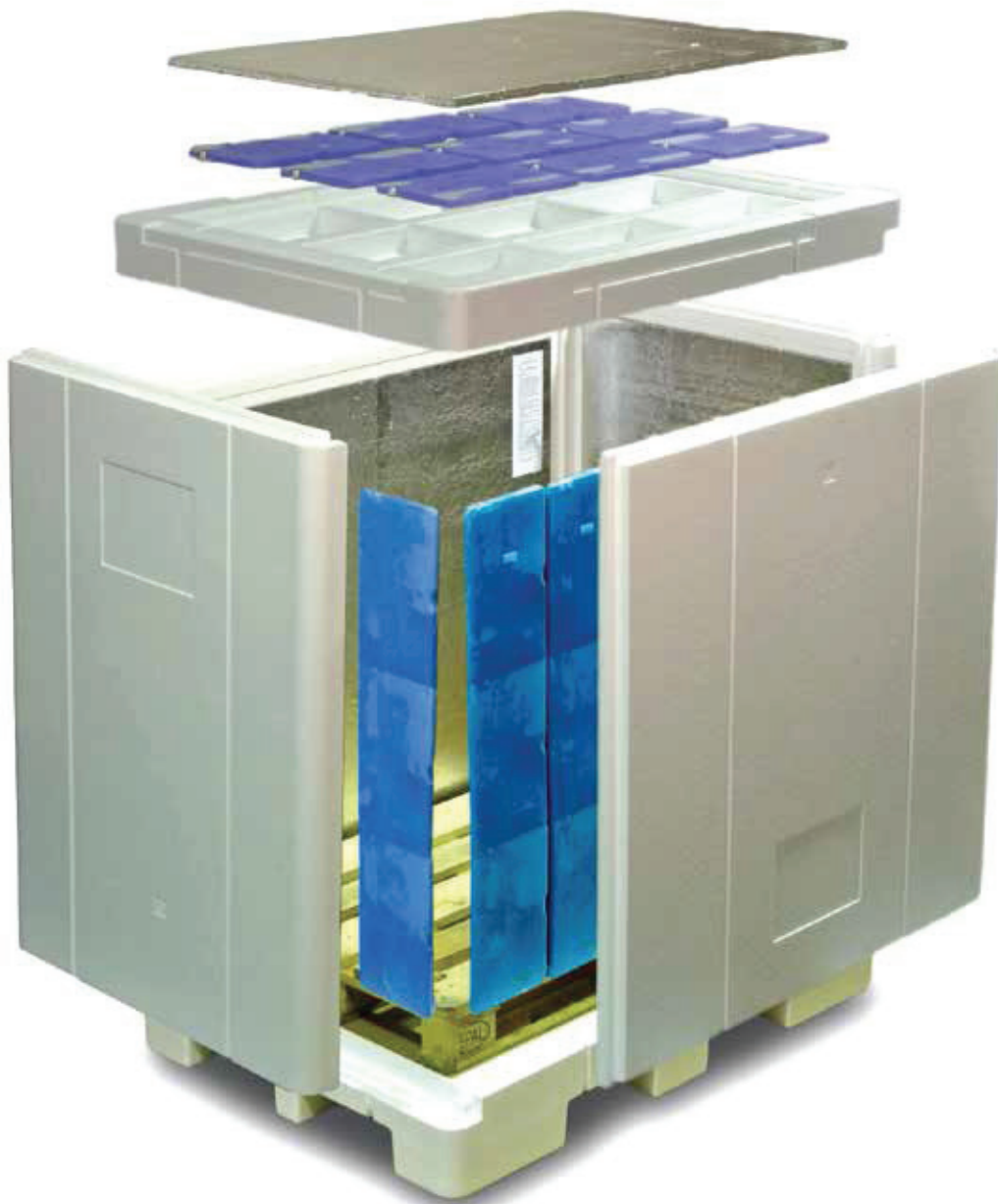




LONG RANGE PALLET SHIPPER

LONG RANGE PALLET SHIPPER

Modular System for Pharma Industry



Deep Frozen



CRT



Cold Chain



Air Freight



Medication



Fork Lifter

Total Temperature Security

EPS [VIP] Pallet Shipper Transport System

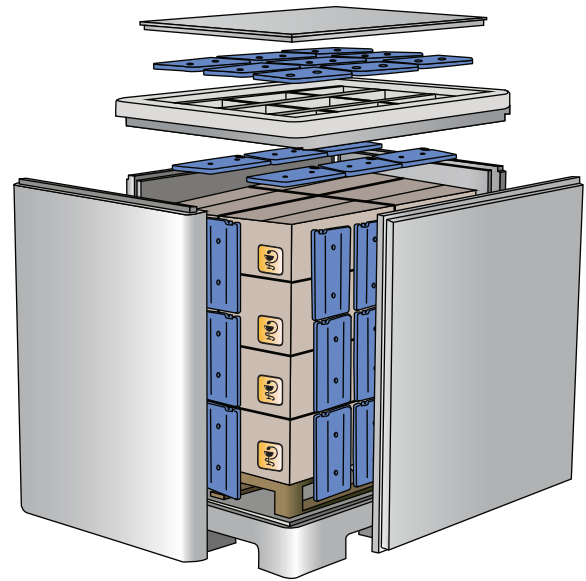
The shipping system built of polystyrene and vacuum insulation was designed for temperature sensitive shipments of complete pallets of medication.

With different sets of temperature stabilizing elements, typical temperature ranges of pharmaceutical industry such as 2 to 8°C / 15 to 25°C / 2 to 25°C or deep frozen can be achieved inside the shipper.

Depending on the configuration a transport time of 120 hours or even more is possible.

Due to the construction of the lid-system, a patent of **delta T GmbH**, transport time could also be easily increased by changing cooling elements in the lid cavities during the transport.

The whole system can be build up quickly and easily by only one person.



Easy assembly in a few steps



First place the base panel and build up two side walls. Then the pallet with the payload (goods) will be positioned on the base panel. In the next step the circle will be closed by adding the remaining two walls.

Then the pre-conditioned Accu Boards will be placed between walls and payload.

Finally you put either the Accu lid or the standard lid on top and after stretching and foiling the system is ready to go.

At One Glance



Modular setup with
single walls



Edge protector to
enable strapping



Compact storage possible



Fork lift and pallet truck
can be used from
all directions



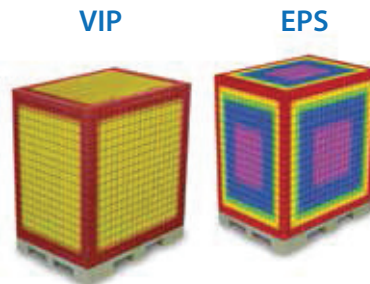
Usable for air cargo
[height 160cm]



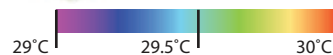
Temperature ranges
2 to 8°C / 2 to 25°C /
15 to 25°C or
deep frozen



Shipment of entire
pallets

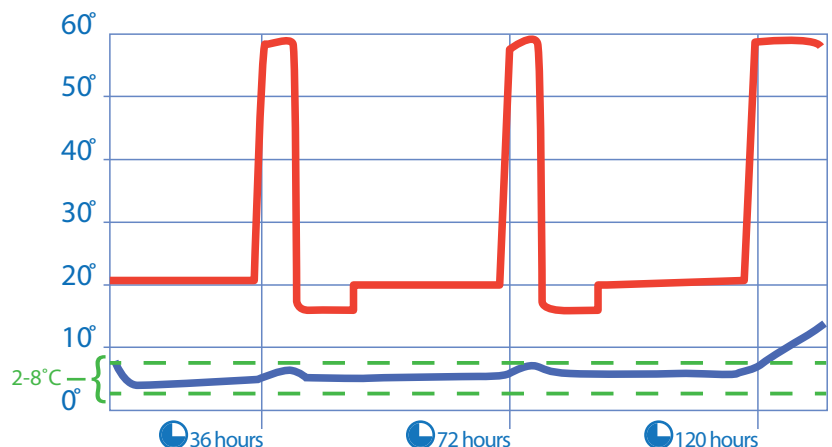


Vacuum insulation provides
10 times better heat/cold
protection than polystyrene
or polyurethane materials



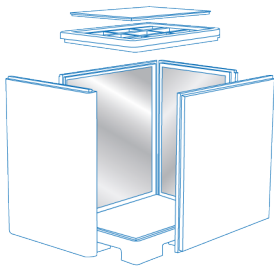
Running time possible: 120 hours

At maximum outside temperature of up to 60°C (short peaks) the cool chain can be kept for up to 120 hours and more. The polystyrene version without vacuum insulation can still reach up to 72 hours.



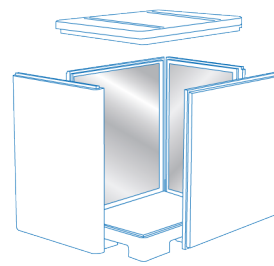
EPS [VIP] Pallet Shipper Ordering information

EPS VIP Pallet Shipper 1200L Accu Lid



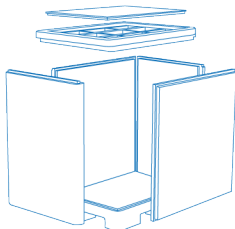
Order No. : B 1005 14 uk
Dimensions:
Outer: 1400 x 1000 x 1600 mm
Inner (payload): 1200 x 800 x 1275 mm
Weight: 43 kg
fits for 18 pieces of Accu S1L x 3Boards and
9 pieces ICE Accu S1L and 9 pieces 4C Accu S1L

EPS VIP Pallet Shipper 1200L Standard



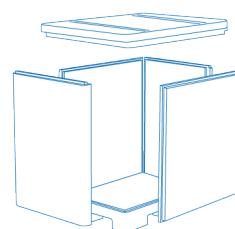
Order No. : B 1005 15 uk
Dimensions:
Outer: 1400 x 1000 x 1600 mm
Inner (payload): 1200 x 800 x 1275 mm
Weight: 44 kg
fits for 21 pieces of Accu S1L x 3 Boards
as 4C, 18C, 22C ICE type

EPS Pallet Shipper 1200L mit Accu Lid



Order No. : B 1006 14 uk
Dimensions:
Outer: 1400 x 1000 x 1600 mm
Inner (payload): 1200 x 800 x 1275 mm
weight: 31 kg
fits for 18 pieces of Accu S1L x 3Boards and
9 pieces ICE Accu S1L and 9 pieces 4C Accu S1L

EPS Pallet Shipper 1200L Standard



Order No. : B 1006 15 uk
Dimensions:
Outer: 1400 x 1000 x 1600 mm
Inner (payload): 1200 x 800 x 1275 mm
weight: 33 kg
fits for 21 pieces of Accu S1L x 3 Boards
as 4C, 18C, 22C ICE type

4C Accu S1L x3 Board



Order No. : A 0900 32 uk
Dimensions: 1082 x 212 x 18 mm
weight: 3.0 kg

ICE Accu S1L



Order No. : A 0810 04 uk
Dimensions: 360 x 210 x 17 mm
weight: 1.0 kg

4C Accu S1L



Order No. : A 0900 23 uk
Dimensions: 360 x 210 x 17 mm
weight: 0.97 kg

22C Accu S1L x3 Board



Order No. : A 0900 33 uk
Dimensions: 1082 x 212 x 18 mm
weight: 3.0 kg

18C Accu S1L x3 Board



Order No. : A 0900 34 uk
Dimensions: 1082 x 212 x 18 mm
weight: 3.0 kg